



**I | I D | A**  
 INTERNATIONAL  
 INTERIOR DESIGN  
 ASSOCIATION  
**WISCONSIN CHAPTER**

november 2008

this issue

feed your soul

membership renewal

volunteers needed

welcome...

webinar

student career day

the great bag bash

member profile

annual sponsors

calendar



# reflections

## Feed Your Soul 2008

Feed Your Soul 2008 was held again this year at FLUX DESIGN on November 7<sup>th</sup>, 2008. Estimates of over 500 tickets were sold for the event. IIDA is a proud sponsor of Feed Your Soul that raises money for Second Harvest of Wisconsin. Many artisans from all over the state provided auction items for this fantastic event. In attendance this year representing IIDA: from left to right, Amy Bartz, Rebecca Brown, Tracy Pugh, Emily Rowe, and Ashley Wagner. Everyone had a terrific time socializing and all for such a great cause. We hope to see more of you at next year's event!



### *About Feed Your Soul...*

Feed Your Soul is a charitable art auction event to raise funds for America's Second Harvest of Wisconsin. Enjoy fine art, good food, libations and more. As a symbol of plenty, simple wooden bowls are transformed by members of Milwaukee's art and design community into innovative and original works of art. The bowls and artwork are highlighted at the event and sold during the evening through a silent auction.

## Membership Renewal

### *It is that time again!*

IIDA appreciates your continued support and hopes that you find value in your membership. We believe that professional affiliation is very important to our industry and advancement of our profession. Membership renewal is due by December 31<sup>st</sup>. You can pay online at [www.iida.org](http://www.iida.org), snail mail response to invoices you may have received. You can go online and print your invoice and snail mail it in as well. If you need any assistance please do not hesitate to contact any IIDA WI Board member or call HQ. Everyone is happy to help, wants to make the process as smooth as possible, and loves that you are with us!

## 2008-2009 IIDA Wisconsin Board of Directors

### President

Koreen Liepitz, IIDA  
[kliepitz@koroseal.com](mailto:kliepitz@koroseal.com)

### President Elect

Laura Quinn, IIDA  
[lacquinn@centurytel.net](mailto:lacquinn@centurytel.net)

### VP, Communications

Sarah Jenne, IIDA  
[jenne@raymondteam.com](mailto:jenne@raymondteam.com)

### VP, Membership

Ashley Phelps Wagner, Associate IIDA  
[wagner@strang-inc.com](mailto:wagner@strang-inc.com)

### VP, Professional Development

JoAnn Rife, IIDA  
[rife@uwosh.edu](mailto:rife@uwosh.edu)

### VP, Government & Regulatory Affairs

Teri Wilson-Ruggles, IIDA  
[truggles@palmerhamilton.com](mailto:truggles@palmerhamilton.com)

### VP, City Centers

Jennifer Everhart, Associate IIDA  
[j.everhart@henricksen.com](mailto:j.everhart@henricksen.com)

### Director, Associate Members

Amy Bartz, Affiliate IIDA  
[bartza@allsteeloffice.com](mailto:bartza@allsteeloffice.com)

### Director, Student Members

Rebecca Brown, Associate IIDA  
[rbrown@creativebusinessinteriors.com](mailto:rbrown@creativebusinessinteriors.com)

### Director, Industry Members

John Norfolk, Affiliate IIDA  
[jnorfolk@creativebusinessinteriors.com](mailto:jnorfolk@creativebusinessinteriors.com)

### Director-Fox Valley City Center

Audrey Olson-Adams, IIDA  
[adesignsstudio@msn.com](mailto:adesignsstudio@msn.com)

### Director-Madison City Center

Mary Chapman, Industry IIDA  
[mchapman@interiorinvestments.com](mailto:mchapman@interiorinvestments.com)

### Director-Milwaukee City Center

Tracy Pugh, Associate IIDA  
[tpugh3@wi.rr.com](mailto:tpugh3@wi.rr.com)

## Volunteer Involvement Opportunities

IIDA WI is always looking for sharp people who want to become more involved in their membership. Some of the areas we are looking for volunteers are;

**City Center Committees**- Assist in preparation and planning of events, CEU presentations, and seasonal events. Able to use your talents as a party planner, organizer, dedication to educational programs, and so much more!

Fox Valley Area contact Audrey at [dirfoxvalley@iidawi.org](mailto:dirfoxvalley@iidawi.org)

Madison Area contact Mary at [dirmadison@iidwi.org](mailto:dirmadison@iidwi.org)

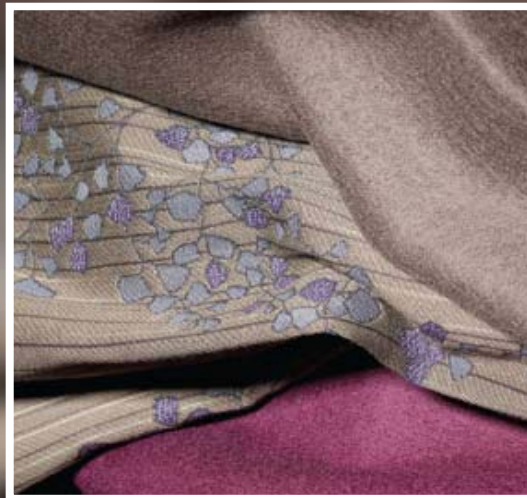
Milwaukee contact Tracy at [dirmilwaukee@iidawi.org](mailto:dirmilwaukee@iidawi.org)

If you are in an area that is not listed above, but would like to see more events held in your area contact Jen at [vpccitycenter@iida.org](mailto:vpccitycenter@iida.org). We would love to expand our offering to you and your area with a bit of help from you!!

**Newsletter Committee** - Help gather articles, new events, and information on new trends, take pictures at events, have a general voice and say in IIDA WI. We are looking of volunteers with a tad bit of extra time, newsletter is published quarterly only, to help us make our newsletter valuable and interesting. If interested in helping please contact Sarah at [vpcommunications@iidawi.org](mailto:vpcommunications@iidawi.org).

**Susan Wohlitz Memorial Fund Fundraising Committee** - Have any great ideas of what ignites designers to get out and raise money for a charity?? Currently, the SWMF Fundraising committee holds the legendary Great Bag Bash, but would love to expand our offering of events to raise funds for this important program. All proceeds go to the advancement of Students in our industry. If interested please contact Becky at [dirstudents@iidawi.org](mailto:dirstudents@iidawi.org).

**Interior Perspectives/ Celebrate in Design Gala** - Is IIDA's annual event held in conjunction with the AIA state convention. We are able to tap into some wonderful



A focus on modern design for over 60 years.

educational opportunities as well and celebrate the best in our state with the design competition. There are many parts that are played in the planning and organizing of this event. We'd love your support no matter if you can only help a little or if you can help a lot. Please contact Jen at [vpccitycenter@iida.org](mailto:vpccitycenter@iida.org).

## The Designing for the Future Campaign... *is going on right now!*

The purpose of this year's Campaign is two fold: To continue ongoing financial support to the implementation of the IIDA-branded NCIDQ study course, and, to increase the NCIDQ Tuition Reimbursement Fund. Any contribution from our members is helpful in reaching the International goal of \$59,000. Please consider a donation. You can easily add it to your membership renewal!!

### Milwaukee Webinar

The Milwaukee City Center had a great turnout on August 20th, 2008, for the "Going Beyond Green Webinar." Nineteen participants enjoyed a lunch together during the program. A special thank you to our Host for this event, Direct Supply Inc., Milwaukee, WI for providing us with the conference location and audio visual assistance to provide this webinar. The designers commented that they truly enjoyed the diversity of projects, the range of designs presented and the discussions by both the project designers and the judges for the competition. The Milwaukee City Center team is looking forward to meeting you at one of our next Milwaukee events, see the calendar for details. Please contact Tracy if you are interested in volunteering at [DirMilwaukee@iidawi.org](mailto:DirMilwaukee@iidawi.org). Tracy Pugh, IIDA Milwaukee City Center Director.



### Welcome...

IIDA Wisconsin would like to warmly welcome our newest members!! Please do all you can to make them feel welcome and get them involved.

Tracy Andre, Student IIDA  
 Kayla Austin, Student IIDA  
 Jessica Bertrand, Student IIDA  
 Laura D. Busalacchi, IIDA  
 Gina Coel, Industry Rep IIDA  
 Rachel Connet, Student IIDA  
 Tara Donahou, Student IIDA  
 Stacey Evans, Student IIDA  
 Kristie Farahbakhsh, Student IIDA  
 Laura Field, Student IIDA  
 Carmen Gardner, Student IIDA  
 Marie Gordon, Student IIDA  
 Sara Hembel, Student IIDA  
 Kelsey Holtz, Student IIDA  
 Todd Jahnz, Industry Rep IIDA  
 Katie A. Kaiser, Student IIDA  
 Jessica Leach, Student IIDA  
 Jean Lichtenberg, Student IIDA  
 Dean Lindsey, Industry Rep IIDA  
 Sara Milanowski, Student IIDA  
 Michael Morici, Industry Rep IIDA  
 Kerry Nelson, Student, IIDA  
 Jacob Reed, Associate IIDA  
 Jennifer Scherr, Student IIDA  
 Victoria Schiller, Student IIDA  
 Tiffany Schutz, Student IIDA  
 Karen Soni, IIDA  
 Andrea Tolzman, Associate IIDA  
 Bryana Vandenberg, Student IIDA

**MDC** Wallcoverings

Bringing More to the Walls

**BOLTA** | genon | LEN-TEX | VYCON

AVANT™ | SURFACE IQ | **IdeaPaint**™

For additional information about the comprehensive collection of wallcoverings we offer please contact customer service:

800.621.4006 | [www.mdcwall.com](http://www.mdcwall.com)







## The Great Bag Bash!

January 22, 2009  
at  
The Delafield Brewhaus  
3832 Hillside Drive, Delafield, WI  
5:00 pm to 9:00 pm

The third annual Bag Bash is in it's planning stages and promises continual fun and laughter with great friends and fundraising. Knoll has once again donated the Knoll Womb Chair for our Grand Prize! If you're luck does not send you home with the Womb Chair you will have plenty of chances to take home many other wonderful prizes and auction items. Thanks to our donors we always have a great silent auction!

We look forward to seeing you at this year's event. Bring friends and family, all are welcome! Look for your invitation in your email box soon or stop by the IIDA WI website [www.iidawi.org](http://www.iidawi.org). The invite will be posted there too.

All proceeds from this event go to the Susan Wohltz Memorial Fund, which is used for the advancement of Interior Design students in the state of Wisconsin. It has been able to offer thousands of dollars in scholarships to our Wisconsin students.

*We hope you will  
join us at  
The Great Bag Bash!*



Susan Wohltz **Memorial Fund**



## Member Profile

**Jennifer Lasecki,**  
Industry Representative



Where do you work and what is your position?  
Target Commercial Interiors and I am a Project Manager

Why did you Join IIDA?  
I joined for two main reasons to be a part of a great Network of Design Professionals and for the great programs that IIDA offers.

Tell us about your family and where did you grow up? I am from Green Bay, Wisconsin originally and I moved North of Green Bay to a smaller North woods community call Sobieski, with my husband where we are currently raising our one year old daughter.

How did you get interested in Interior Design? Or whatever design related field you are in? I have always had an interest in building and putting things together. I loved to build with legos when I was a child and as I matured my interest in layout and colors developed as well.

### FUN FACTS & TRIVIA INFO ABOUT ME

My hero.. My Mother is my Hero. She has always shown me how important it is to assert my independence, to be self confident as well as to show kindness to others, and always offer to help those in need.

Who do you admire..My Father

I can't wait to...To spend Christmas with my Daughter

Most Recent Adventure... I took my Daughter to a water park

Vegetable... Green Beans

Pet... I have two pets, two Chocolate Labs, Kate and Milo

Favorite Movie... Fifty First Dates

Hobby... Ski, Golf, Bow Hunt, taking rides with my Husband on our Harley

Kids... (I) 1 year old daughter Charlie

Book... My favorite is Dan Brown's, *Angle and Demons*

## 2008 IIDA Wisconsin Annual Sponsors

### *Platinum*

Knoll Textiles - Susie Schomann  
MDC Wallcovering - Diane Lovegren, Industry IIDA

### *Gold*

B & B International - Barry Bielawski

### *Silver*

AVI Midwest - Jane Phillips  
Coyne Associates - Tim Coyne  
Creative Business Interiors - John Norfolk, Affiliate IIDA  
Flad Architects - Randy Schmitgen, IIDA  
Jaeckle Distributors - Jennifer Young  
K.R. Schaetz Associates, Inc. - Keith Schaetz  
Koroseal Mid-West - Koreen Liepitz, IIDA  
Masland Contract - Renee Primeau, Industry IIDA  
RK Witt & Associates/Integra - Kurt Witt  
Schroeder Solutions - Scott Gierhahn

### *Other*

Larry Fehrm & Associates - Larry Fehrm

*Thank You!*

## Things to Keep Your Eyes Out For....

Madison Area Holiday Party in February  
Fox Valley Holiday Party in January  
Milwaukee Holiday Party in January

Associate Member Night Out December 4<sup>th</sup> in Madison,  
*other locations and dates to be determined soon.*

## Save the Date!!

Student Career Day will be sponsored by IIDA and ASID Wisconsin chapters again this year. The theme for this year's event will be 'i design' and it will be a days worth of valuable tools to help interior design students *design* themselves. American Family Insurance Headquarters in Madison WI will be the site for the event, which will be held on February 20, 2008.

## Calendar of Events '08-'09

### November 2008

**25 Tuesday**  
IIDA WI BOARD OF DIRECTORS MEETING  
Conference call, 11:00am-1:00pm  
All IIDA members are welcome

### December 2008

**16 Tuesday**  
IIDA WI BOARD OF DIRECTORS MEETING  
Location: Creative Business Interiors, West Allis  
4:00pm-6:00pm  
All IIDA members are welcome

### January 2009

**22 Thursday**  
IIDA SWMF (Susan Wohltz Memorial Fund) GREAT  
BAG BASH FUNDRAISER  
Delafield Brewhaus, Delafield, WI, 5:00pm-9:00pm

**27 Tuesday**  
IIDA WI BOARD OF DIRECTORS MEETING  
Conference call, 11:00am-1:00pm  
All IIDA members are welcome

### February 2009

**2-6 Monday-Friday**  
IIDA STUDENT MENTORSHIP WEEK

**6-8 Friday-Sunday**  
CLC (CHAPTER LEADERSHIP COUNCIL)  
Chicago, IL

**20 Friday**  
IIDA/ASID WISCONSIN INTERIOR DESIGN STUDENT  
CAREER DAY

**24 Tuesday**  
IIDA WI Board of Directors Meeting  
Location: TBD, 4:00pm-6:00pm  
All IIDA members are welcome

### March 2009

**24 Tuesday**  
IIDA WI BOARD OF DIRECTORS MEETING  
Conference call, 11:00am-1:00pm  
All IIDA members are welcome

### April 2009

**28 Tuesday**  
IIDA WI BOARD OF DIRECTORS MEETING  
Location: TBD, 4:00pm-6:00pm  
All IIDA members are welcome